

2.0L | CUP

2.0L Cup - Technical Regulations 2021

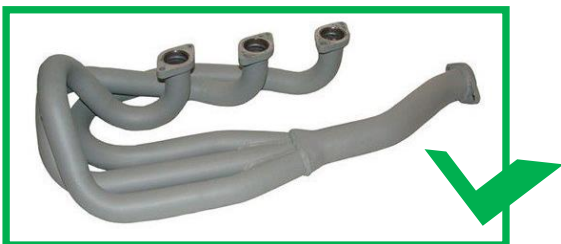
Based on the Homologation Form 183 (apart for exhaust manifolds) and Appendix IX of FIA 2021 Appendix K for Competition Grand Touring Cars.

What is not authorized by the regulations or by the Appendix K is forbidden.

		Notes
Minimum weight	1002 kg	<ul style="list-style-type: none"> - FIA weight, mandatory at any moment of the meeting - Ballast : 70kg maximum, sealed in the car
Wheels diameter	5 ½J x 15' or 6J x 15'	2 Litre Cup specific regulations
Brakes/Calipers	Original 1965 ATE caliper design and pad size.	<ul style="list-style-type: none"> - Pistons FRONT > φ 48mm and REAR > φ 38 mm - As per FIA Homologation Form 183 - Pads dimensions : <ul style="list-style-type: none"> o Front : length 62mm, width 42mm o Rear : length 55mm, width 37mm
Front disc brake Diameter	282mm / thickness 12,7 mm.	<ul style="list-style-type: none"> - Solid Disc– non ventilated – non grooved – non drilled - Cooling ducts allowed only if leading to front valance on the existing fog lamp holes.
Rear disc brake Diameter	285mm / thickness 10 mm.	
Pedal Box	Dual circuit allowed, without modification of the position or attachment of the pedals or structure or car's body, as per Appendix K.	<ul style="list-style-type: none"> - Hydraulic braking systems may be converted to dual circuit operation which provides simultaneous operation on all four wheels via two distinct hydraulic circuits. - Brake Bias adjustment must be removed from the dashboard and cannot be operable from the driver's seat.
Maximum front track	1379 mm	2 Litre Cup specific regulations
Maximum rear track	1351 mm	
Ride height	100 mm	<ul style="list-style-type: none"> - Mandatory at any moment of the meeting – Tyre pressure +/- 2 bars/30psi - Art. 4.6 – 2.0L Cup regulations - Appendix K – Appendix VIII / Art 10.2
Anti-roll bars	<ul style="list-style-type: none"> - Diameter : free - One piece only - Not adjustable 	<ul style="list-style-type: none"> - Shape must conform to period
Maximum capacity / Bore / Stroke	1991 cm3 / 80mm / 66 mm	Aluminium case only – Type 901
Crankshaft	<ul style="list-style-type: none"> - Original, as per period - Minimum weight : 13,3 Kg with bolts - 7 bearings 	<ul style="list-style-type: none"> - Appendix K – Appendix IX / Art 5.8 - Weight : +/- 5% of tolerance for weight, as per Appendix K
Flywheel	<ul style="list-style-type: none"> - Minimum weight : 5,6 Kg with bolts - Diameter : 215mm 	<ul style="list-style-type: none"> - +/- 5% of tolerance for weight, as per Appendix K
Timing	Original, as per period	<ul style="list-style-type: none"> - Hydraulic chain tensioner forbidden - Aluminium timing gear forbidden, with the exception of the original aluminium layshaft gear
Valves	<ul style="list-style-type: none"> - φ 39mm intake / φ 35mm exhaust - Stem size 9mm only 	<ul style="list-style-type: none"> - Port size to be standard, as per FIA Homologation Form 183: 32mm each, +/-1mm - Camshaft carrier: 3 bearings cam carriers only - Bearing carrier diameter : 47mm - Camshaft profile free - Rocker arm : aluminium or titanium forbidden - 6 bolts 3 bearing cam carrier covers only
Rods / pistons	<ul style="list-style-type: none"> - Piston : minimum weight : 390 gr with 3 rings and pin - Rod : minimum weight : 550 gr - Rod center distance : 130 mm - Piston pin diameter : 22mm 	<ul style="list-style-type: none"> - +/- 5% of tolerance for weight, as per Appendix K - Design free - Forged pistons allowed

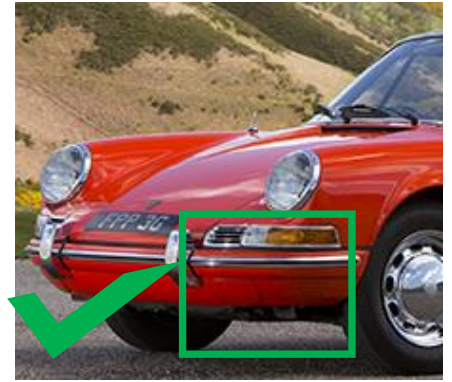
Intake	<ul style="list-style-type: none"> - 2 triple- barrel Solex 40 PI - Ports diameter : <ul style="list-style-type: none"> o 40mm on admission side o 32mm on engine side 	<ul style="list-style-type: none"> - Venturis and chokes : free diameter, - Weber and PMO forbidden - Ports diameters : +/- 1mm of tolerance
Ignition	Contact breaker / coil only	<ul style="list-style-type: none"> - Magic Eye, CDI or MSD forbidden - Mechanical spark advance/timing only - All internal engine sensors forbidden
Oil cooler	<ul style="list-style-type: none"> - 2 maximum authorized, - Oil pump free, - Oil lines diameter free. 	<ul style="list-style-type: none"> - Possible location of oil coolers: Original location on the engine or in the front wings.
Gearbox / Transmission	<ul style="list-style-type: none"> - 5 speed synchro Porsche - Helical gears only 	<ul style="list-style-type: none"> - Types 901 – 901/0 and 902/1 - Final drive : 7/31 - Löbro transmission shaft allowed, maximum 6 fixing screws on gearbox side. - Gearbox ratios as per FIA Form 183 - Lever and linkage conform to period specs - Shift light allowed – One bulb only – No progressive systems
Dampers / Drivetrain	Non threaded steel dampers	<ul style="list-style-type: none"> - Aluminium forbidden - Reinforcements on the body forbidden - Adjustable spring plates forbidden
Exhaust manifold	<ul style="list-style-type: none"> - Silencer free - Dansk manifolds only - Exhaust system internal dimensions: <ul style="list-style-type: none"> o Maximum 35mm on engine side o 46mm on the flange 	<ul style="list-style-type: none"> - 2 Litre Cup specific regulations. - Noise limit : 105dB(A) max (in dynamic) - Ports diameters : +/- 1mm of tolerance - Dansk manifold without heat exchangers only, parts #1620800470 and 1620800480 are mandatory, with no modification in any way
Rear axle	Original differential only	System "Torsen" (Helical ATB from Quaife) forbidden
Bodywork	Steel only	<ul style="list-style-type: none"> - Aluminium and polyester forbidden - 3 rear view mirrors mandatory : one central, windscreen-mounted + one on each door - Headlamp glass free - Maximum 2 additional lights, for a total of 4 lights maximum (not including fog lamps) - Cooling ducts out of the front valance forbidden – Must be within the shape of the car - Interior trim (dashboard, door panels) should conform to period specs as much as possible
Roll cage	6 mounting points mandatory, maximum and minimum authorized.	Cage bolted or welded to the body, as per FIA Appendix K - Appendix VI -Article 1.2.3.3.1.
Windscreen	Only laminated glass	Polycarbonate and tempered glass forbidden
Side glasses	Laminated glass or polycarbonate	Thickness : 4mm minimum
Tyres	185/70 R15	Avon CR6ZZ only
Number of engines	Maximum 2 engines per season	Barrel sealed to the block

- **Shape and dimensions of the exhaust manifolds : Dansk 1620800470 and 1620800480 only references allowed**





- Possible configurations of the front valance



- Engine sealing

